

SNOWBOARD COACH LEVEL 1 & 2 COMBO 2024

EARN UP TO
£1000
WITH OUR NEW
WORK OPTION

A CONCISE PACK OF
WHAT YOU NEED FOR
OUR COMBO LEVEL
1 & 2 COURSE IN
ARINSAL, ANDORRA



snowboard™
coach.co.uk



WELCOME

This Level 1 and 2 combo course is simply aimed at riders who wish to become good instructors. Maybe you're fed up with the rat race and need a change of career or you fancy doing a season away and want to get something out of it or you simply want a change of lifestyle. The common goal is gaining the ability to do something we love and there is no better way than being able to snowboard every day.

Our Level 1 and 2 combo instructor season program sees you arriving with us in Arinsal in December and doing the Level 1 a few days after arrival. We will have a training day prior to the course start date to get you used to the mountain environment.

Our winter program gives candidates the best possible training and environment to pass these first 2 levels and be able to teach all over the world.

As ever with our courses, you receive training from the highly qualified BASI instructors and trainers. You also get to experience what it's like to be a "local" and part of the snowboard scene in a thriving winter village. Something that will be invaluable as an instructor in the years to come.

WHERE IS THE COURSE?

All of our winter courses take place in Arinsal and Pal in the Nord Region in Andorra. Andorra has been a popular destination for UK riders since the mid 90's and has always catered for snowboarders with a great park and some great riding especially in Arcalis, the freeride capital of Andorra.

Andorra has a duty free tax status so is great value for money meaning you can go out and enjoy yourself without breaking the bank. We have written a resort guide for Whitelines magazine so please email us if you would like a copy of this.

WHO CAN ATTEND?

Any recreational snowboarder can attend this course. You will need the motivation to work hard and want to learn. You will also be open to change your riding and ideas of what you are doing on a snowboard. We will make you ride the mountain better than you even have done.

During the winter you will need to log 70 shadowing hours. This can be done in resort.

PRE-REQUISITES

WHAT DO I NEED TO DO BEFORE?

To attend our winter program we will advise doing the following: Obviously we will help you all the way with this.

FIRST AID (APPROX £120):

A separate 2 day First Aid course is needed. These take place at all the indoor centres up and down the UK. If you are based abroad then a course can be done locally but would still need to be a minimum of 2 days in duration. Contact us for more info on recommended providers.

PRE - COURSE STUDY:

Prior to arrival in resort you will need to complete an online study module to help to prepare you for the winter season ahead and also for the level 1 instructor course. This is free to all SBC candidates doing this program. The online content will cover the following areas:

- BASI Teaching Terminology
- Level 1 Riding Standards
- BASI Teaching Terminology
- Snowboard Equipment
- Freestyle PArk Etiquette
- Snowboard Central Theme
- Teaching Children
- Safety Considerations for the Mountain

WHAT'S THE COST?

WHAT'S IT GOING TO COST?

As ever we are keeping it as cheap as possible so that becoming a BASI Instructor isn't going to cost you a small fortune. We know we are the cheapest season BASI course provider out there....we are the trainers and examiners and this course is way longer and cheaper than all our competitors.

We also have 2 accommodation options. Self catering apartments and our hotel inclusive option that has been really popular in previous seasons.

SELF CATERING OPTION:

ALL SEASON: 16TH DECEMBER - 31ST MARCH

£7,995

OPTIONAL EXTRAS:

There are other optional extra's that can be added onto this such as BASI Coaching course, Ski Level 1 and BASI Adaptive Level 1 courses.

More details can be found later on in this info pack.

NEW INCLUSIVE OPTION

ALL SEASON: 16TH DECEMBER - 31ST MARCH

Our hotel option is proving popular. A full all you can eat breakfast and a 3 course evening meal are included EVERY DAY of your stay with us. Your room will also be cleaned and sheets and towels changed every other day. The hotel rooms are all en-suite and have tea and coffee making facilities and TV's and wi-fi.

Basically you only need to spend money on beers and food up the hill if you feel you need it.

The 3* hotel is located a short 5 min walk from the gondola as well.

£9,695

WHAT'S IN IT

WHAT DOES THIS INCLUDE?

Over the years we have learned to include the things you need and take out the things you don't need so we can keep the course fee as low as we possibly can. Our unbeatable package for the 2024 season will include the following:

- All in resort accommodation with bills included
- Airport transfers on the specified start and finish dates
- Season "Nord" pass covering Pal/Arinsal/Arcalis area.
- All riding/teaching training costs
- BASI level 1 & 2 course and exam fee
- Mountain shadowing experience
- Stay up to the 31st March 2024
- **NEW! Feb half term work and earn option**
- Employment opportunities for future seasons at the Arinsal mountain school.
- Discount on private sessions with the SBcoach in UK and in resort prior to the exams if you require extra input.
- Discount on snowboard equipment from our sponsors of up to 35% prior to the course.
- SBCoach wristband giving you special discount in selected bars in resort. No high French prices - beers here are just 2 euro a pint!!
- Special SBCoach T-Shirt and sticker pack on arrival.
- **Inclusive Option:** Includes full breakfast every morning and 3 course evening meal every night.
- **Inclusive Option:** Room cleaning and sheet and towel changes every day.

The Snowboard Coach crew will be on hand **ALL** season. We will be around for advice or to chat about any issues you feel you need to talk to us about.

WHAT'S NOT INCLUDED:

The Level 2 course DOES NOT include the following:

- Flights
- Food (Inclusive includes breakfast and evening meal)
- Drinks
- Travel Insurance
- Spending money



OTHER INFORMATION

START & FINISH DATES:

The dates of our season program are detailed below.

Standard Arrival: Saturday 16th December 2023
Standard Departure: Sunday 31st March 2024

AIRPORT TRANSFERS:

These are included in the price. The arrival date must be one of the above. The departure date is flexible and can be booked anytime up to the 31st March

Once your transfers have been booked then **ANY** change of date/time of your transfer will incur a **£10** admin charge imposed on us by the company we use.

More information regarding the transfers will be supplied when booking onto the program.

Transfer time to Andorra is around 3 hours.

FLIGHTS:

Barcelona El Prat is the easiest airport for Andorra. There are many airlines from all over the UK that fly there. Other airports can be accommodated by prior arrangement. Again more information regarding flight times will be sent to you upon booking onto the program.

LIFT PASSES:

All lift passes are valid for every day of the course including weekends. It is valid for the "Nord" region of Arinsal, Pal AND Arcalis - so 3 resorts!

Your lift pass will be waiting for you when you arrive.

Once you have your lift pass it is your responsibility and Snowboard Coach cannot be held responsible for extra charges incurred due to loss or theft of lift passes.

MONEY IN RESORT:

There are plenty of cash points in and around town but there is no actual bank facility to physically change money in Arinsal. If you intend to bring cash please change this in the UK prior to coming out.

*** PLEASE NOTE:** The currency in Andorra is still the EURO *

PAYMENT SCHEDULE

Booking is really simple once you have decided to join us on the course. We run a FREE payment option spread out over the Summer and into Autumn

- If booking a place in April to July - a £1,000 deposit is all that's needed to secure a place. Then an interim payment of £2,500 + half of extras booked is needed by the 31st August 2023. The balance (including any extras) needs to be settled no later than 30th October 2023.
- If paying in August - A deposit of £1,500 is needed to secure a place on the course. Then an interim payment of £3,000 + half of extras booked is needed by the 15th Oct with the balance settled before 30th November.
- Anyone booking in September/October 2023 will need a £3,000 deposit and the balance settled no later than 30th November 2023.

Once we have received your deposit payment we will send you the transfer information PDF and you can book your flights around this. We will obviously be here to help you in regards to flights and anything else you need to know along the way.



OPTIONAL EXTRA'S

OTHER COURSES:

EXTRA TRAINING IN RESORT:

If you feel like you want extra training during the season then we do private 1:1 sessions at a super discounted rate of just 50 euros per hour for those on this program.

BASI COACHING COACH:

We have the option to do the new BASI 5 day Coach exam. The course fee will be approximately £450 and can be paid when course numbers are confirmed.

BASI SNOWBOARD ADAPTIVE L1 EXAM:

We need a minimum of 6 people for this course to run. Can be used as a second discipline as well as or instead of the BASI Ski Level 1. It's a 5 day course that will qualify you teach people with people with disabilities and learning difficulties. The course fee is payable direct to BASI and will be £450.

BASI SKI LEVEL 1 EXAM:

Just like the snowboard Level 1 but obviously for skiing. We will be offering this course at the end of every season with the chance of optional ski training through the season.

SPECIAL DISCOUNTS?

The earlier you book the more you can save. Everyone on our BASI Level 2 season program will be entitled to a discount on any of our summer recreational courses in the UK including private sessions* * This does not include the Level 1 or Level 2 programs

One Day Course: Only £125
Private Sessions: 10% discount

On top of this all candidates will be entitled to special discounts on kit from all of our sponsors. This is ordered direct through Snowboard Coach. For 2024 we have the following deals:

THE SNOWBOARD ASYLUM: 15% discount from the whole store.

SALOMON SNOWBOARDS, BOOTS AND BINDINGS: 35% off on all boards and bindings.

BERN HELMETS: Get 20% discount on the entire range.

VOLCOM SNOW: 20% off the entire Volcom collection.

POW GLOVES: A small glove company from the USA. We wear the Storm Series Stealth Gore-Tex glove and we use them all year round. Awesome gloves that we 100% recommend for the winter with us and POW offer a cracking 20% off RRP.

NEW WORK OPTION

NEW FOR 2024 - WORK AND EARN!

For those who want to earn from the season, there will be an opportunity to work for the mountain snow school during the busy Feb half term and GET PAID!!

So not only will you be clocking up extra hours towards your level 2, you will also be able to gain valuable, real teaching experience and earn some extra spending money.

This is totally unique with our course here in Arinsal. You will have special permission and insurance from the mountain school to use your level 1 to teach beginners for this week.

The work and earn is optional and you do not have to work if you prefer to just work on your riding instead.....

You can just use the half term to ride and shadow.



Ryan from our 2023 season course, styling the mountain school uniform during Feb half term. (clocking nearly 40 hours of lessons and earning over £800)

OUR WRISTBANDS

OUR "LOCAL" WRISTBAND:

Over the past few seasons we have had other people not on our courses trying to get our SBcoach discount in bars and cafes in town and up the mountain. Because of this we introduced our SBcoach Wristband with different colours for each season.

Our SBcoach wristband tells all the bar staff in our favourite places that you are with us and that you get local seasonaires price straight away. Some of these places even offer us a special SBcoach only price, that not even the locals get....

We try and make you feel part of the great local scene here in Arinsal from day one.

The idea sounds cheesy but it works!

It also saves you guys asking about discount - as soon as the staff see it they will know.

The band itself is fully waterproof and shower proof so is fine to wear every day.

This band is only available for you and for what you buy. It wont cover any other friends and family that travel separately ie not with us. That's why everyone on a Snowboard Coach course gets this band and no-one else.



WHERE IT WORKS!

POLAR BAR:

These guys look after us all winter and offer discount on their daily specials only to SBcoach clients. This is our favourite mountain cafe in Arinsal. We eat there every day as its too cheap not to. With our wristband you will too....Here is what we get:

3 COURSE MEAL OF THE DAY ONLY 10.50 EURO:

- Starter
- Main meal (with Pasta option)
- Dessert

PLATE/PASTA OF THE DAY FOR 7.90 EURO:

- Main meal (with Pasta option) and soft drink

SANDWICH CHOICE FOR ONLY 6.90 EURO:

- Bacon/Cheese/French omelette "Bocadillo"
- Coffee or soft drink

Anything else on the menu you will get a discount of 20% should you not wish to take these specials.

The Polar bar is located up the mountain on the middle floor of the complex when you get off the gondola and is where we start and finish most days.

CISCO'S BAR: A favourite of ours over the years of being here. They do us an amazing SBC only discounts ALL THE TIME. Free nachos and chili in Apres ski as well.

FUGAZZETA: Our local coffee and chilled bar run by our good friend Joaquin. Daily deals and local prices on all drinks and food with a 10% discount.

DERBY DELI & IRISH PUB: A fast take away style deli up the hill that gives us great discounts on food - plus local prices on all drinks in the bar in the village.

EL MOLLI: Specials during apres, local prices on all drinks

360 EATERY & BAR: Local prices on all drinks.

EL CABIN: Local prices on all drinks in the bar.

A full list of discounts will be emailed prior to the course.



COURSE SCHEDULE

TRAINING SCHEDULE

Constant input and coaching does not work, you need time to practice!! This is why our coaching routine is set up this way below.

DECEMBER ARRIVAL:

Spend the first week training and taking part in the Level 1 course. After the course you have free time to work on what you have learned, start your shadowing hours, explore the mountain and just enjoy some free riding time. You also get to spend the Christmas and New Year getting to know the locals and the village.

JANUARY : PERFORMANCE WEEK

This is where the Level 2 training starts. There will be 3x3 hour training sessions during the first days in Jan. The idea behind this week is to re-affirm and refresh the fundamental's learned on the Level 1 Instructor Course and how it all applies to the mountain. It includes coaching on piste performance, steep slopes and variable snow as well as the park and freestyle.

FOLLOWING WEEKS: LEVEL 2 TRAINING TIME

During this period we will have 3x3 hour sessions each week. All our coaches' who run this program hold full cert ISIA/ISTD qualifications under the BASI system with Ash holding full trainer accreditation. No other snowboard company running this type of course can boast this. You will also be shadowing the Mountain school to build those hours.

You will have regular video feedback sessions where you will get to see your progression. Be prepared to receive critique on your riding, you can always get better!

FEBRUARY HALF TERM

There will be no training this week. But as mentioned earlier in the pack, you have the chance to take part in the work and earn program. By the end of this week every candidate must have 70 hours of shadowing/work signed off and sent to the BASI office.

AFTER THE CHAOS: MORE TRAINING TIME

You'll know everything you need to know about your riding by now and what you need to work on to pass the level 2. You'll be making comments on your own video runs, riding the entire mountain very well and gearing yourself up for the final push in the last 2 weeks. You will also be confident in teaching the central theme and be happy to conduct sessions beyond the central theme.

THE LAST 2 WEEKS: BASI LEVEL 2 EXAM....

This will run the first 2 whole weeks in March.

This is about putting together all that you have learnt during your time with us....This is the BASI L2 exam.

AFTER THE EXAMS: FREE TIME

Spend the rest of the season riding, chilling and enjoying the March powder and bluebird days. You can also use this time to gain extra shadowing hours, doing extra courses with us or just enjoying yourself before going back home.

PLEASE REMEMBER: Outside this program, it's all about practice and getting up the hill and working on your feedback. The more effort you put in during the season the more you will benefit during the exams.

THE BASI SNOWBOARDING ETHOS:

The ethos of BASI snowboarding is about flow and output it's what the board is doing. This depends on the snow we are riding and the task at hand. It's not, do this and do that - we don't spoon feed you on the Level 2 course. As you become more aware of your riding, you will need to become more aware of how you personally use the fundamentals that you are being taught. The more aware you are of this, the nicer your riding will feel and the better rider you will become. 'Snowboarding isn't black and white'

Of course we are going to tell you what you need to fix and give you exercises to improve these weak areas, but part of the course is you figuring out and feeling what works best for you from the information that we give you. How much fore, how low to ride, how high to ride. We can't tell you this, you need to feel this. You will notice the way your coaches ride, we all use the same fundamentals of snowboarding but in varying amounts, yet the outcome - the riding - looks smooth and flowing. This is what we want to teach you.

EVERYBODY is different, we bend, move, stand and sit in many different ways and you will find that you may use a different fundamental more or maybe less than somebody else.

During the exams the trainers will continue to push your riding and may use new exercises and drills that you not have done, using different explanations of the same fundamentals....Its all about the above - making YOU think and FEEL more - "What suits me the best?"

This course is not only about preparing you to take the exams but to train you to be responsible for yourself and prepare you for the role of an instructor in seasons to come.



THE SC APARTMENTS

WHAT'S THE ACCOMMODATION LIKE?

The apartments are located a short 1 minute walk to the top chair lift in the village. So a great location. The accommodation is either 2 bedroom or 3 bedroom. Each apartment has a big lounge/diner with TV for relaxing and kitchens for cooking. Depending on the size you either have 1 or 2 bathrooms with showers.

Unlike other companies, we do not cram people into our apartments. You won't be sharing 4 to a room with us. Accommodation will be 2 per bedroom. If it's a 2 bed apartment then it will sleep 4 people max. 3 Bedroom apartments will sleep 6 max. Couples are obviously allocated a room together. Bedrooms have under bed storage or wardrobes. Being honest the only time you will spend in the bedroom is when you're sleeping!

Wi-Fi is available throughout each apartment and in every single bar in town and of course up the hill.

DEPOSIT

A £250 damage deposit is payable on top of the course fee by every candidate. If the apartment is left **as it was found** then this will be returned after course, once the apartments have been inspected. Any damages, cleaning, breakages etc...will be billed at the cost to put right and this will be split between everyone in the apartment. You will also be responsible for your own keys. If you lose them, you will need to replace them at your own cost.

BILLS:

All bills are included. This includes water, heating and electric. As snowboarders using the mountain we should be concerned about global warming and energy saving. Just because the bills are included doesn't mean you can forget about them. Simple things like turning the heating and lighting off when you go out will make a big difference. There will be rules in place to help combat this and will be discussed prior to the course.

SHEETS, CLEANING & WASHING: A set of bed sheets are provided and can be used/washed on a rotation basis.

FRIENDS STAYING POLICY: Only 1 friend can stay in the apartment for a max of 7 days - as long as it is cleared with Snowboard Coach and the rest of the people you share with. The cost per week is £150 payable in advance to Snowboard Coach.

If you have more than 2 friends, then we can arrange a discounted package for them in a hotel in the village and include lift pass and all the other SBC benefits.

If you have been on holiday in France then you will be pleasantly surprised with where you stay, if however you are used to staying at the Ritz in 5* accommodation, then we can arrange this but the program will cost you considerably more ;).



THE INCLUSIVE HOTEL

WHAT'S THE HOTEL LIKE?

We use a 3* hotel located a 5-7 min walk from the main gondola in Arinsal. It's actually one of the hotels we use for our weekly riding courses - So it's not some cheapo motel ;).

The hotel has an awesome all you can breakfast every morning and a 3 course meal EVERY night. So all your food is taken care of.

Your will be allocated a double or triple room (depending on course numbers) which will be cleaned every day and sheets and towels changed every day too. The room has tea and coffee making facilities and TV and wifi throughtout. All rooms are en-suite with showers and baths. Basically everything you want.

Single rooms are available but charges will obviously be higher...please get in touch if you are thinking of this.

The hotel has a bar and area's for relaxing as well as a 24 hour reception for any problems/questions.

DEPOSIT

A £200 damage deposit is payable on top of the course fee by every candidate. Any damages, cleaning, breakages etc...will be billed at the cost to put right.

BILLS:

Obviously again, all bills and taxes are included.

SHEETS, CLEANING & WASHING: Your room will be cleaned every other day and sheets and towels changed. It does not include a personal laundry service. But you can pay to have all your washing done at a local laundrette.

FRIENDS STAYING POLICY: If you have friends that want to come and visit, then we can arrange a discounted package for them in the same hotel and include lift pass and all the other SBC benefits, so they feel like part of the crew and can drink and eat with our discounts. It goes without saying that friends are not allowed to stay with you in the hotel room!

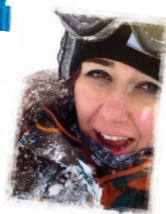
BREAKFAST AND EVENING MEAL: As mentioned this option includes an all you can eat buffet breakfast with unlimited juice, tea, coffee. The evening meal is 3 course with a starter buffet (again as much as you want), followed by a choice of 3 main courses and ending with a choice of 3 desserts. You won't go hungry that's for sure.



TESTIMONIALS

Over the years of doing these course we have developed a great Snowboard Coach family and we all keep in contact. Many of them are now living and teaching snowboarding all over the world. Below is some feedback from those guys to help you make your mind up about joining us. Please feel free to contact us and we can even put you in touch with previous course candidates.

ff



I had the best time training and riding with Ash and the crew on the L2 course out in Arinsal, Andorra.....

I learnt so much over the course and the frequent video feedback was super beneficial. Don't get me wrong, it wasn't easy but the hard work was fun and worth it when I looked back at my progress over the season and seeing how far Snowboard Coach had helped me come.

UPDATE: Since the course I've spent a season teaching in Japan and 2 winters teaching in Canada. My dream was to teach all over the world and you guys have made that come true - Thanks Snowboard Coach!!!

Beth Allsworth

ff



I took my Level 1 with Ash in Tamworth back in 2018, he was absolutely brilliant. I loved it so much, I decided University can wait and I booked onto the season course.....

It's so easy to book and get everything sorted through Ash because he does it all for you! Once there, both Ash and Olly were absolutely brilliant trainers and used their experience and expertise to prepare me for the exam. With their awesome coaching I'm super happy to have got the Level 2 at the end.

But aside from all that I had a really great time. Arinsal is unlike any other resort I've been to, it's brilliant. Going out for the season also means I got to meet so many great people that I wouldn't have met otherwise. It was a real shame to leave.

Big shout out to Ash, Olly and everyone on the course for making it a brilliant season.

Luke Jeffrey

ff



It was quite a last minute decision for me to spend 3 months with Snowboard Coach. I had found them by digging around on the internet in the Autumn and it seemed like the best choice to me and their reviews were amazing.....

Looking back I couldn't have made a better decision, my quite limited knowledge of snowboarding was quickly expanded by the great coaching I received on the season course.

The course made me look at snowboarding very differently and it particularly helped me to better understand what it takes to be a BASI snowboard instructor, not just in terms of technical ability but how we engage a group of people and how to progress with our own riding.

I actually failed my Level 1 but with Ash and Olly coaching me through my Level 1 resit in February and thanks to their great teaching I went on to pass my Level 2 in March.

I would definitely recommend Snowboard Coach to anyone looking to further their own ability and understanding. Whether you want to progress your riding or your teaching, these guys have got you covered!

Max Johnson

ff



While taking my L1 Snowboard exam for my second discipline with Snowboard Coach, I realised how much I love to be on a snowboard.....

After a brief discussion with Ash my mind was made up, and I was all set for the Level 2 season programme in Arinsal.

Ash and his crew guided us through every element of our training, setting us up well for the exam. Coaching sessions were well structured, with plenty of clear guidance and drills to practice in our own time.

It was a fantastic course, with great coaches and the Vallnord area is a superb resort to be in....

Thanks to Snowboard Coach for making it happen.

UPDATE: I spent the past winters working full-time for Altitude in Grindewald-Wengen in Switzerland. The training given by Snowboard Coach has given me so many more tools than just being able to pass the Level 2 alone. Beyond the course, Ash and the crew have been at the end of the phone for any challenges I've faced during my first seasons. These guys are awesome!

Jo Whiting

SEASON CREW OF 2022



YOUR RESPONSIBILITIES

We ask every candidate to be professional and respectful at all times not only to your trainers but also to your peers - the people you will be living with for the season. Understanding other people's needs and being able to manage them as a team is a big part of being an instructor. You will also get to know a lot of people in Arinsal and will be known as part of the snowboard coach crew. It's a small friendly town so creating the right impression is paramount. Remember we are not just looking at your snowboarding skills but also how you would represent BASI as a working instructor in a resort environment.

The courses are not to be taken lightly and you will be pushed with your riding and your teaching. But you will learn loads of things that you would never even think of and WILL ride the mountain better than you ever have done.

We will be asking all candidates to be punctual for the training sessions. They are not compulsory but missing them WILL put you behind in the training program. Turning up hungover because you went out the night before would not be too good for your own development.

THE COURSE IS NOT A GUARANTEED PASS: We will give you all the tools and feedback you will need to pass the course and the video feedback sessions will be invaluable. But we are not in control of how you learn or your ability to improve or indeed how much effort you put it...that bit is up to you.

We encourage you to use the time in resort wisely. The more you practice around our training program and take charge of your own riding and learning, the more chance you have of success.



A BIT MORE ABOUT US

Snowboard Coach hold the highest qualifications attainable in teaching snowboarding.

We hold the highest accreditation from the ISIA which is the worldwide governing body for snow sport instructors as well as the ISTD status which is only given to the highest level snow sports coach's.

We also have full trainer accreditation from ALL the snowboard governing bodies within Great Britain - This means that ALL the governing bodies use Ash and Snowboard Coach not only to deliver training and assess standards but also to qualify instructors - making us the ONLY snowboard training company in the UK able to do this.

This isn't to show off or trying to prove how good we are, it's to assure you that you are in good hands and are getting what you pay for. Teaching snowboarding is our full time profession.

This is also what makes us the first choice for TV production companies from the BBC, to ITV, to programs like Channel 4's "The Jump".

A MESSAGE FROM ASH - OWNER OF SNOWBOARD COACH

At the end of the day it's all about enjoying what we do and I wouldn't be here today if I didn't. After 30 years of snowboarding and 25 years of teaching a sport that I love, I still spend the summer coaching in the UK and China and every winter out in Andorra, I've also been a BASI trainer for 20 years so we know how to train you properly!

Thanks for enquiring about the Level 2, I hope you can join us out in Arinsal and look forward to riding with you next winter.

SNOWBOARD COACH : APPROVED BASI PARTNER

Snowboard Coach is also a FULLY APPROVED BASI PARTNER. This is an accreditation that BASI are only issuing to approved companies with a proven track record of delivering a quality BASI product.

This means that we have been through a rigorous quality control process assessing everything from our training and delivery methods to our course structure and organisation. We have surpassed this stringent criteria with flying colours. **We were the first snowboard company to receive this** and are proud to carry this accreditation.

When looking for an instructor course package this is the accreditation you need to look out for to ensure you are getting the training you expect.



Snowboard Coach has earned the highest levels attainable from the following Worldwide Snowboarding Governing bodies:



And is sponsored by:



Please read our terms and conditions on the following page...

TERMS AND CONDITIONS

Snowboard/Snowsports Coach are trading names under All Mountain Training SLU - an Andorran registered company - from herein referred to as "Us" and "We". You will be referred to as the "client". All applicable under Andorran Law.

Terms and Conditions for our "Season" Level 2 Programme

1. The client must have fulfilled all of the course prerequisites as detailed in our course info pack. The client must also be safe and medically sound to travel and to be in a winter resort and have appropriate insurance cover for Andorra. We will not accept any clients travelling against medical advice and you must state this in the booking form you receive from Us. We can not be held responsible for costs incurred for failure to declare this.

2. The client will only be accepted and secured provided:
a) The application is accompanied by a non-refundable or transferable initial deposit.
b) The booking confirmation is signed and returned.
c) The client unconditionally accepts these terms and conditions of booking when confirming via email that a place on the course is required.

3. The second instalment of £3,000 + half of any extras requested must be received by Us by the requested date, paid to our Andorran Account in GBP Sterling or Euro at prevailing rate that will be given at the time of booking confirmation.

4. The remaining balance must be received in full by Us by the 31st October 2023, paid to our Andorran Account in GBP Sterling/Euro (at prevailing rate) except when:

- Clients enrolling in September, October 2023 will be required to pay a £3,500 deposit and the full balance to be settled by 15th November 2023.
- Clients enrolling in November or December 2023 will be required to pay the full balance.

4a. If payments are not made within 7 days of these deadlines then We reserve the right to re-allocate you're place without refund.

5. All changes to bookings must be received in writing by email.

6. Other BASI Courses offered require a minimum number of clients to run. If minimum numbers are not met these courses will be cancelled and course fee returned to the client by BASI. In this instance we can not be held liable for secondary loss/ expenses due to course cancellation.

7. All clients must be insured for our courses. We advise every student to buy insurance **AS SOON AS YOU CONFIRM YOUR BOOKING WITH US**. Please do not wait until the week before you travel.

8. Cancellation: in the event of cancellation by the client the deposit paid **WILL NOT BE REFUNDABLE/TRANSFERABLE**. If paid in full then the balance minus deposit will be refunded except when:

a) Client cancels within 6 weeks of the course start date – **NO REFUND WILL BE GIVEN**.

9. We strongly recommend that all clients embarking upon ANY of our courses take appropriate insurance which covers both cancellation and curtailment and course reimbursement/cover.

10. Proof of insurance or similar will be required prior to attending the course.

11. We will refund appropriate monies (pro rata) if the decision is made by Us to cancel all or part of the training program.

12. No monies will be refunded by Us in the event of an injury sustained whilst participating in ANY of our courses, where injury leads to missed sessions, curtailment of the course; then in this instance it is necessary to make an insurance claim. We will provide the necessary receipts.

13. If the venue of the course is adversely affected by snow, weather, force majeure or **any other circumstances beyond our control** that cause cancellation of any/all parts of our course and package offered - **NO REFUND WILL BE GIVEN**. Again We insist on a suitable insurance policy as detailed in point 7.

14. In the event of the above in paragraph 13: You, the client, agree that We cannot be held responsible for refunds.

15. We reserve the right to refuse training to any client who, in the opinion of the Us or the BASI trainer is unsuitable for snow sport instructor training.

16. Any client found under the influence of alcohol or drugs during course contact time (ie a training session or shadowing time) will be removed from the course **permanently** and with **NO REFUND**.

17. In the event that the client is refused training on the basis of paragraph 12, 13, 15 & 16 You agree that **no monies will be refunded**.

18. In the event of any arrest or infraction between the client with the local Police in relation to drink, drugs or ANY circumstance that see's YOU the client arrested/detained/ removed from the country. We will not be held responsible. We will stand by the decision of the enforcing agency. Again **no monies will be refunded**.

19. In the event of point 18; Our limited responsibility is to ensure that the client is given contact with the British Embassy.

20. You the client agree that except for death or personal injury arising through the negligence of Us or BASI, We or BASI shall not be liable for any loss or damage arising whether in respect of death, bodily injury, illness suffered or contracted, loss, costs, damages or expenses incurred for anything on our program.

21. It is the client's responsibility to ensure that all accommodation, transport and any other facilities provided or organised by Us, is treated with respect and appropriate consideration as if their own.

22. We will not be responsible for any damage caused by a client. You, the client, will be held liable for any costs incurred in such a way and will agree to settle any costs immediately to 'make good' any and all damage caused.

23. As an applicant to be a client on a course or package organised by Us and BASI, whether applying by telephone, email or letter you agree to abide by these conditions when confirming your booking with us, regardless of whether you have signed and returned the requested booking form.



snowboard
coach.co.uk

**FOR MORE INFO &
MORE COURSES VISIT**

WWW.SNOWBOARDCOACH.CO.UK

INFO@SNOWBOARDCOACH.CO.UK



**WATCH US ON YOU TUBE
YOUTUBE.COM/SNOWBOARDCOACHVIDS**



**FOLLOW US ON INSTAGRAM
SNOWBOARDCOACH**



**FOLLOW US ON TWITTER
SBcoach_UK**



**JOIN US ON FACEBOOK
WWW.FACEBOOK.COM/SNOWBOARDCOACH**